

ensures high precise position setting.
 Motor overheating protection
 Inner overheating protective component can automatically
 off to prevent motor from damage
 when ac... e.
 Opening
 Arrow in... ED display on housing
 optional
 Operat...
 Direct i...
 injury.



Multi... actuator

ELECTRIC ACTUATOR

GALA makes a complete range of high quality actuators, comprising GE series quarter-turn and GEM series multi-turn actuators which are suitable for all general valve applications requiring control and indication. It works hard to provide satisfying control solutions through innovative technologies.

Powerful Features:

- **Safety & Future tendency**
- **Light Weight and Waterproof**
- **Accurate Position**
- **Motor Overheating Protection**
- **Light Weight and Waterproof**
- **Independent Wiring Box**
- **High Performance Motor**
- **Multi Control Mode**
- **High Protection and Explosion-proof Level**
- **Explosion-proof**

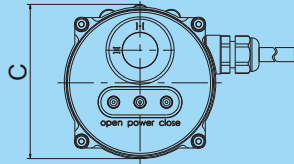
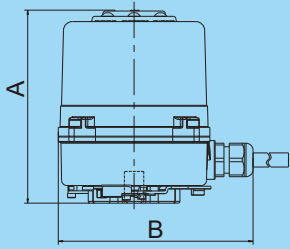


GE Series Quarter-turn Actuator

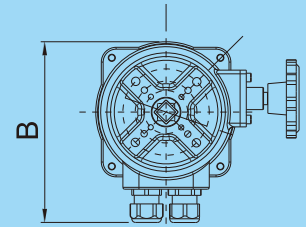
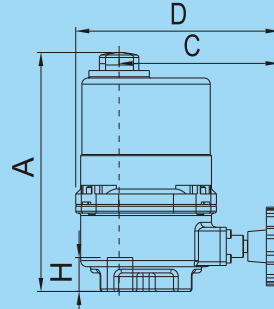


GEM Series Multi-turn Actuator

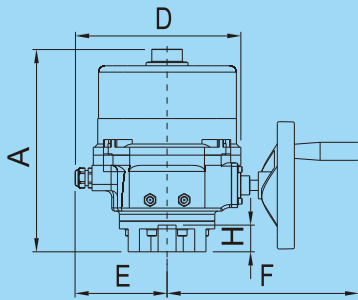
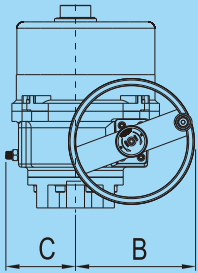
GE Series Quarter-turn Actuator



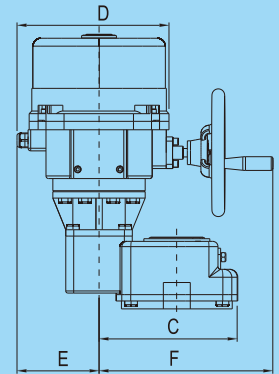
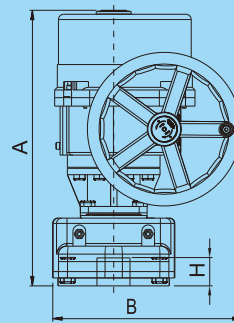
GE01-GE03



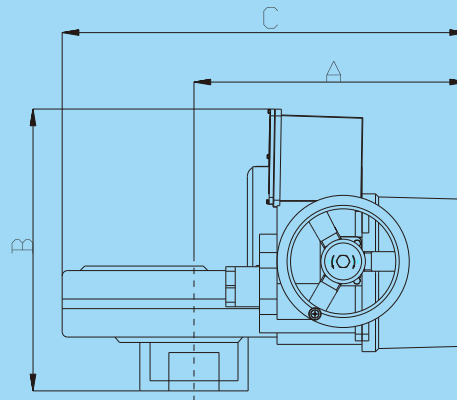
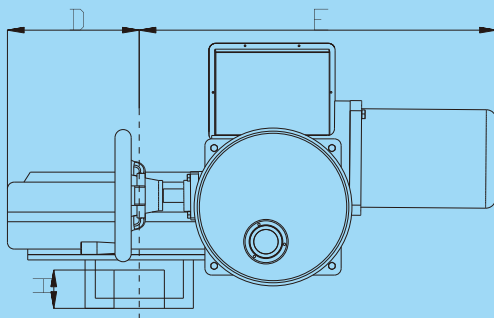
GE04-GE08



GE10-GE310



GE350-GE800



GE1000-GE1300

➔ GE Series Quarter-turn Actuator

Model	GE03	GE05	GE08	GE10	GE20	GE30	GE40	GE60	GE80	GE100
GALA BV PN10	2"-3"	4"	5"		6"	8"	10"	12"	14"	16"
GALA BV PN16										
Model	GE130	GE160	GE180	GE230	GE310	GE350	GE500	GE800	GE1000	GE1300
GALA BV PN10	18"		20"		24"					
GALA BV PN16		18"								

Model	A	B	C	D	E	F	H
GE01							
GE02	110	111	87	--	--	--	--
GE03							
GE04							
GE05	188/218	145	108	165	--	--	20
GE08							
GE10							
GE20	265	123	79	216	120	240	35
GE30							
GE40							
GE60							
GE80	321	187	103	262	150	297	55
GE100							
GE130							
GE160	365	187	103	262	150	325	65
GE180							
GE230	378	241	119	293	161	346	65
GE310	442	241	119	293	161	380	85
GE350	532	359	226	293	161	346	85
GE500							
GE800	543	375	343	293	161	324	130
GE1000	530	174	712	182	564	--	110
GE1300	580	190	776	198	615	--	130

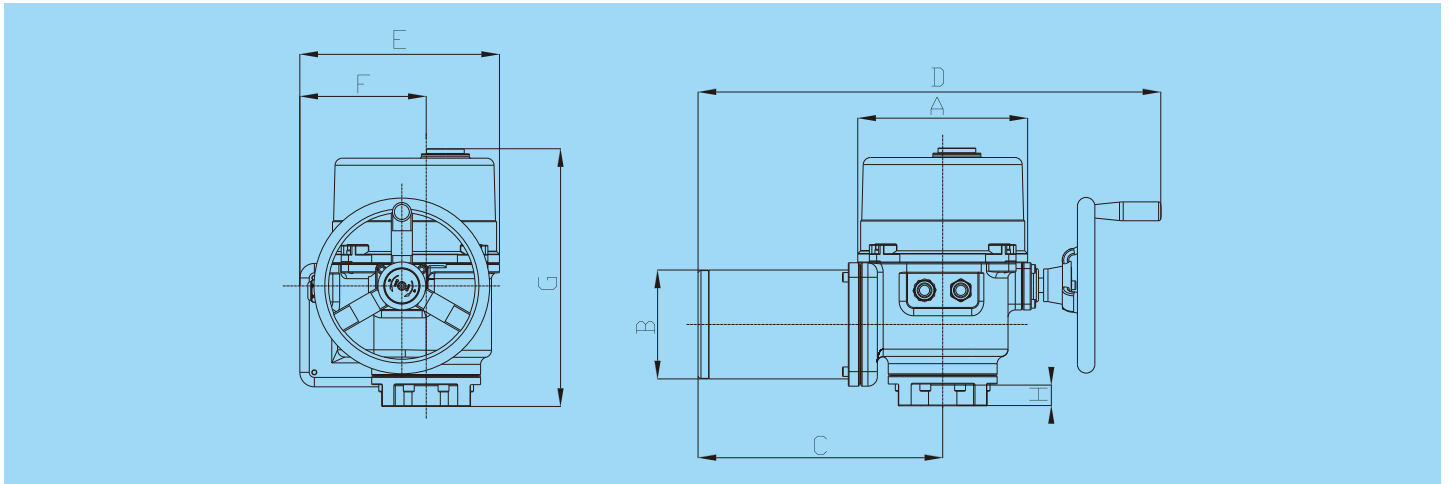
👉 Standard configuration remark:

1. The standard coating color of actuators is black. Please consult us when another color is needed.
2. Standard input/output signal of modulating type is 4~20mA.
3. On/off type actuators adopt dry contact to indicate actuator position condition of fully open and fully close. For modulating type this contact is optional function.
4. Adopting heating resistance to reduce moisture within housing.
5. For all 3 phases power actuators, torque switch mechanism is adopted to avoid over torque output.
6. Motor protection level meets class F insulation, H grade is optional..
7. The operation time of 60Hz is 5/6 of that of 50Hz, the maximum output torque for both is same.
8. GE03/GE05 economic model without handwheel are available.
9. Other voltage is also available. Please consult us for more information.

➔GE Series Quarter-turn Actuator

Model	Max output torque/Nm		Power/W	Operation time/S	Mounting flange	Allowed Max. valve stem size mm	Weight Kg
	AC220V	AC380V	AC220V	AC220V	ISO5211		
	50Hz 1Phase	50Hz 3Phases	AC380V	AC380V 50Hz			
GE01	10	—	5	13	F03&F04&F05	□7-11	1
GE02	20	—	8	12	F03&F04&F05	□7-11	1
GE03	30	—	10	11	F03&F04&F05	□7-11	1
GE04	35	—	10	11	F03&F05&F07	□11-14, $\phi \leq 14$	3
GE05	50	—	10	15	F03&F05&F07	□11-14, $\phi \leq 14$	3
GE08	80	—	10	22	F03&F05&F07	□11-14, $\phi \leq 14$	3.6
GE10	100	100	40	19	F05 or F07 or F10	□11-17, $\phi \leq 24$	11
GE20	200	200	40	39	F05 or F07 or F10	□11-17, $\phi \leq 24$	11
GE30	300	300	40	39	F05 or F07 or F10	□11-17, $\phi \leq 24$	11
GE40	400	400	90	29	F10 or F12 or F14	□17-27, $\phi \leq 38$	22
GE60	600	600	90	39	F10 or F12 or F14	□17-27, $\phi \leq 38$	22
GE80	800	800	90	47	F10 or F12 or F14	□17-27, $\phi \leq 38$	22
GE100	1000	1000	120	47	F10 or F12 or F14	□17-27, $\phi \leq 38$	22
GE130	1300	1300	120	47	F10 or F12 or F14	□17-27, $\phi \leq 38$	22
GE160	1600	1600	90	64	F10 or F12 or F14	□17-27, $\phi \leq 38$	29
GE180	1800	1800	120	64	F10 or F12 or F14	□17-27, $\phi \leq 38$	29
GE230	2300	2300	200	38	F12 or F14 or F16	□27-36, $\phi \leq 50$	36
GE310	3100	3100	200	53	F12 or F14 or F16	□27-36, $\phi \leq 50$	49
GE350	3500	3500	200	76	F14 or F16	□36-46, $\phi \leq 65$	76
GE500	5000	5000	200	105	F14 or F16	□36-46, $\phi \leq 65$	76
GE800	8000	8000	200	143	F14 or F16	□46-55, $\phi \leq 75$	107
GE1000	—	10000	2250	52	F25	□50-85, $\phi \leq 100$	161
GE1300	—	13000	3000	52	F25	□50-85, $\phi \leq 100$	165

➔ GEM Series Multi-turn Actuator



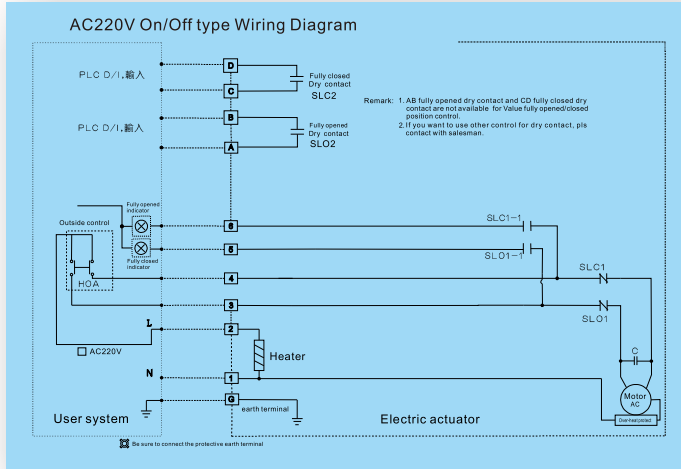
Model	Max output torque/Nm AC380V/50Hz/3Phases	Power/W AC380V	Output speed/RPM AC380V/50Hz	Mounting flange ISO5211	Allowed Max. output stem size/mm	Weight /Kg
GEM13	130	375	23	F10 or F12	□17-27, $\Phi \leq 38$	60
GEM25	250	750	23	F10 or F12	□17-27, $\Phi \leq 38$	60
GEM45	450	1500	23	F10 or F12	□17-27, $\Phi \leq 38$	65
GEM72	720	2250	23	F10 or F12	□17-27, $\Phi \leq 38$	65

Model	A	B	C	D	E	F	H
GEM13	234	150	271	571	275	174	55
GEM25	234	150	287	586	275	174	55
GEM45	234	150	338	637	275	174	55
GEM72	234	150	368	667	275	174	55

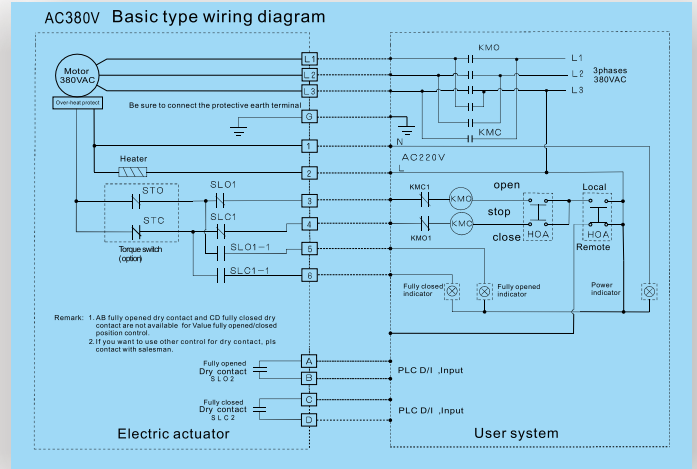
👉 Standard configuration remark:

1. The standard coating color of actuators is black. Please consult us when another color is needed.
2. On/off type actuators adopt dry contact to indicate actuator position condition of fully open and fully close. For modulating type this contact is optional function.
3. Adopting heating resistance to reduce moisture within housing.
4. For all 3 phases power actuators, torque switch mechanism is adopted to avoid over torque output.
5. Motor protection level meets class F insulation.
6. The operation time of 60Hz is 5/6 of that of 50Hz, the maximum output torque for both is same.
7. Other voltage is also available. Please consult us for more information.
8. There are only basic information in the catalogue, please contact us for more details, such as IP rating, limit switch etc.

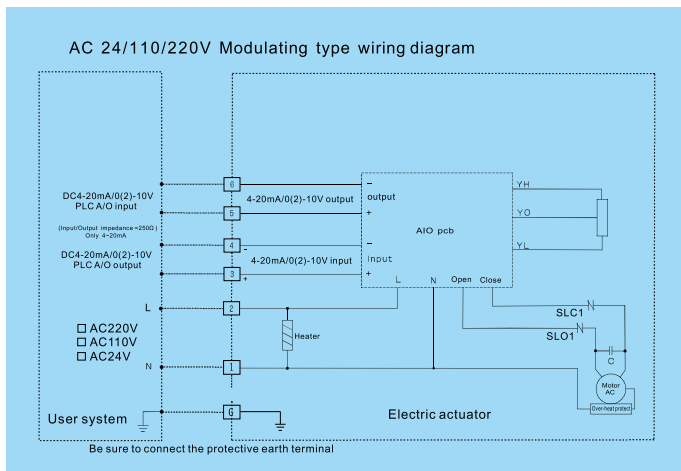
Internal Wiring Diagram



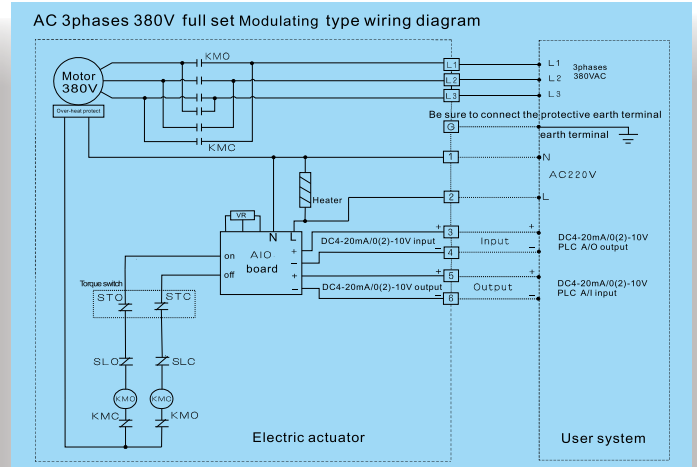
ON-OFF TYPE AC220V



ON-OFF TYPE AC380V



MODULATING TYPE AC220V



MODULATING TYPE AC380V

➔ **More Options**



Modulating Actuator



Explosion-proof Actuator



Intelligent Actuator



Battery-return Actuator

GALA | *Regulating Systems*



GALARS INC
11200 Westheimer,
Suite 201 Houston,
Texas 77042
Tel:(713)562-8136
Fax:(713)782-6803
Website:www.galars.info
E-mail:info@galars.info

Distributor: